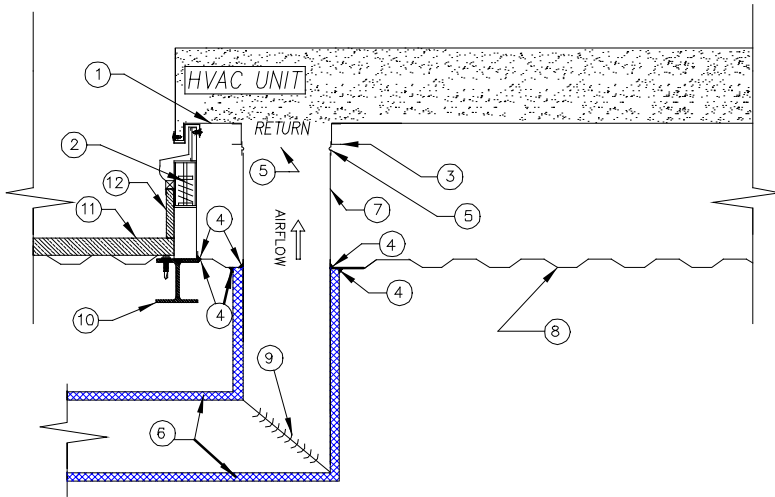


# HUSHCORE™ **BARRICADE™** SYSTEM

## ACOUSTICAL LAGGING FOR DUCT WITH INTEGRATED ROOFTOP UNIT DETAIL



BY RTU UNIT MANUFACTURER

1. RTU Base
2. HUSH CURB™ HIC/HIR/HPC Vibration Roof Curb
3. Integral Curb Duct Support
4. HUSH SEALANT™ Acoustical Grade Caulk at Duct Drops & Curb Perimeter
5. RTU Openings
6. HUSH WRAP™ Acoustical Composite Lagging

BY HVAC CONTRACTOR

7. Duct Work
8. Roof Deck Flashing to within 1/4" of all Duct Drops but not in contact with Duct Wall
9. Turning Vane

BY GENERAL CONTRACTOR

10. Building Steel
11. Built-Up Roof or Concrete
12. Insulation and Cant Strip

DESCRIPTION

HUSHCORE™ **BARRICADE™** System shall be field installed on ductwork where indicated on the drawings with HUSH WRAP™ composite acoustical insulation and HUSH SEALANT™ Acoustical Caulk. HUSH SEALANT™ HSAC-100 shall be applied everywhere necessary to achieve an air tight finished installation. HUSH WRAP™ composite acoustical insulation shall meet Class "A" per ASTM E84 Flammability, Smoke Density Index of 19.5 and Flame Spread Index of 12.5. Temperature range for the HUSH WRAP™ material shall be -10°F to 180°F.

PERFORMANCE

Insertion Loss Data shall meet the listed values when tested in accordance with ASTM E-1222.

HUSHCORE™ <b>BARRICADE™</b> System - Insertion Loss													
HZ	315	400	500	630	800	1000	1250	1600	2000	2500	3150	4000	5000
Insertion Loss	2	2	8	13	11	23	27	28	30	30	27	31	32